

[] in inches

MACHINE DIVIDED INTO TWO PARTS FOR HANDLING (PART A+PART B)

[68,95]
1751

PART A

SLUDGE RETURN (OUTLET)
DN100 (4")
FLANGE - DIN2576 & ASME B 16.5

SLUDGE INLET
DN80 (3")
DIN2576 FLANGE

[121,86]
3095

PART B

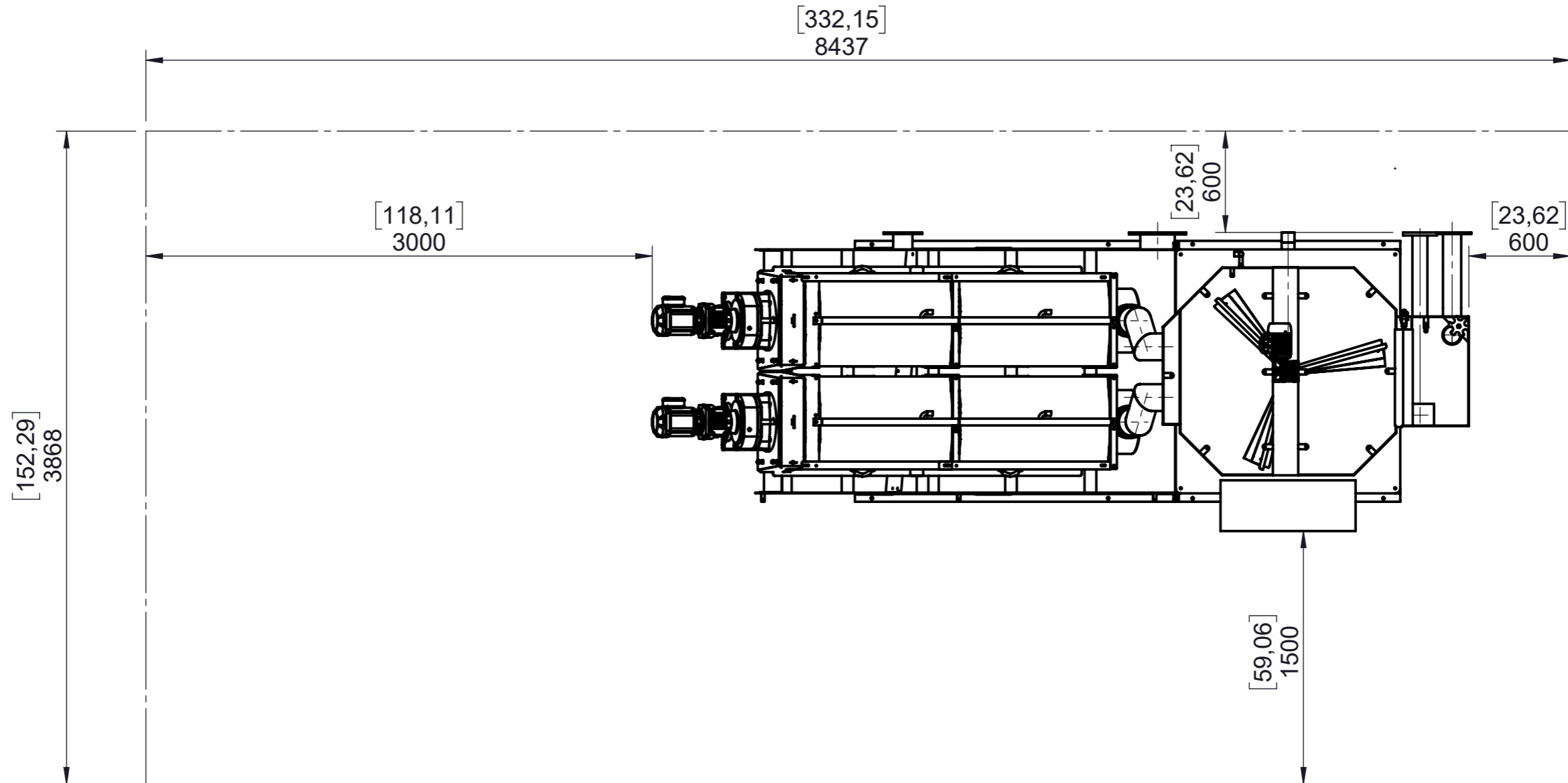
FILTRATE OUTLET
DN200 (8")
FLANGE DIN2576

SLUDGE DRAINAGE (OUTLET)
DN65
G2.5" BSP/NPT MALE

SLUDGE RETURN (OUTLET)
DN100 (4")
FLANGE - DIN2576 & ASME B 16.5

UNLESS OTHERWISE SPECIFIED, ALL DIMENSIONS ARE IN MILLIMETERS		SURFACE FINISH:		PROJECTION: ISO-E	SEMIPRODUCED MATERIAL
				TOLERATION: ISO 2768 m K	PROTECTED ACCORDING TO ISO 16016
				ACCURACY: ISO 8015	
NAME	SIGNATURE	DATE	ponďěl 27. ledna 2014	NAME:	
DRAWN BY: ING. TOMÁŠ MÍVALT		CHANGED	ponďěl 1. února 2021	MP-DW-402	
		ASSEMBLY NO:	T-04b-01	DRAWING NO: T-04b-01_09	
		MATERIAL:		A3	
www.mivalt.cz		MASS: 2933169.34 g	SCALE: 1:30	SHEET 1 FROM 3 SHEETS	

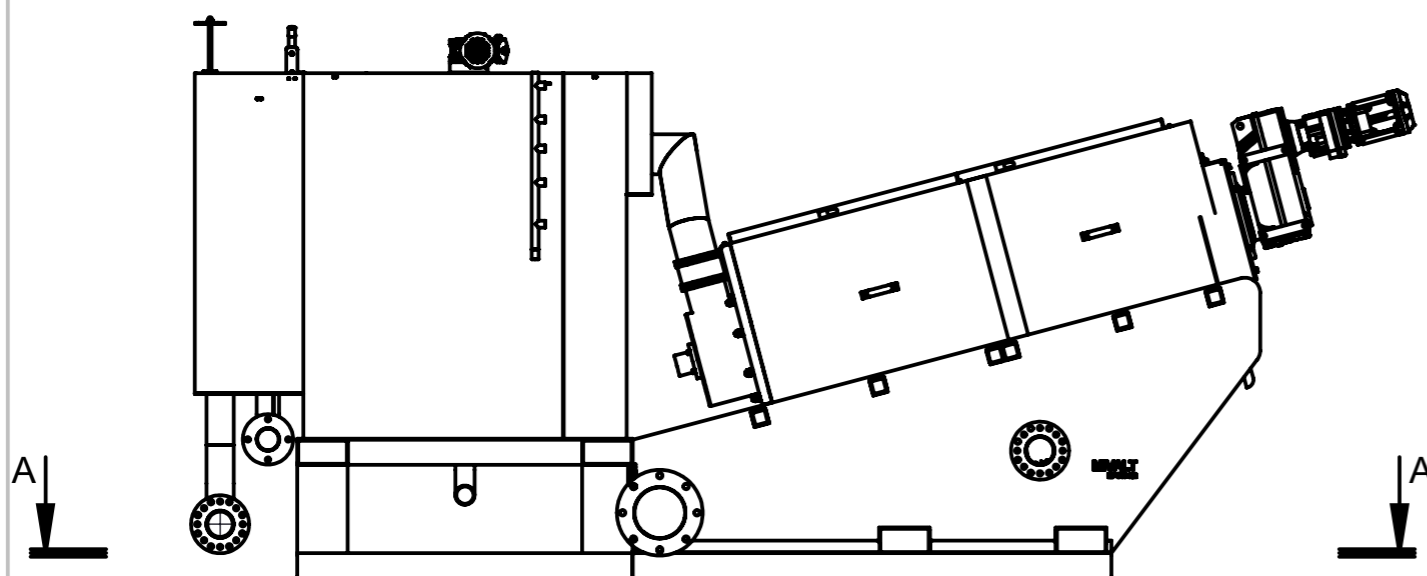
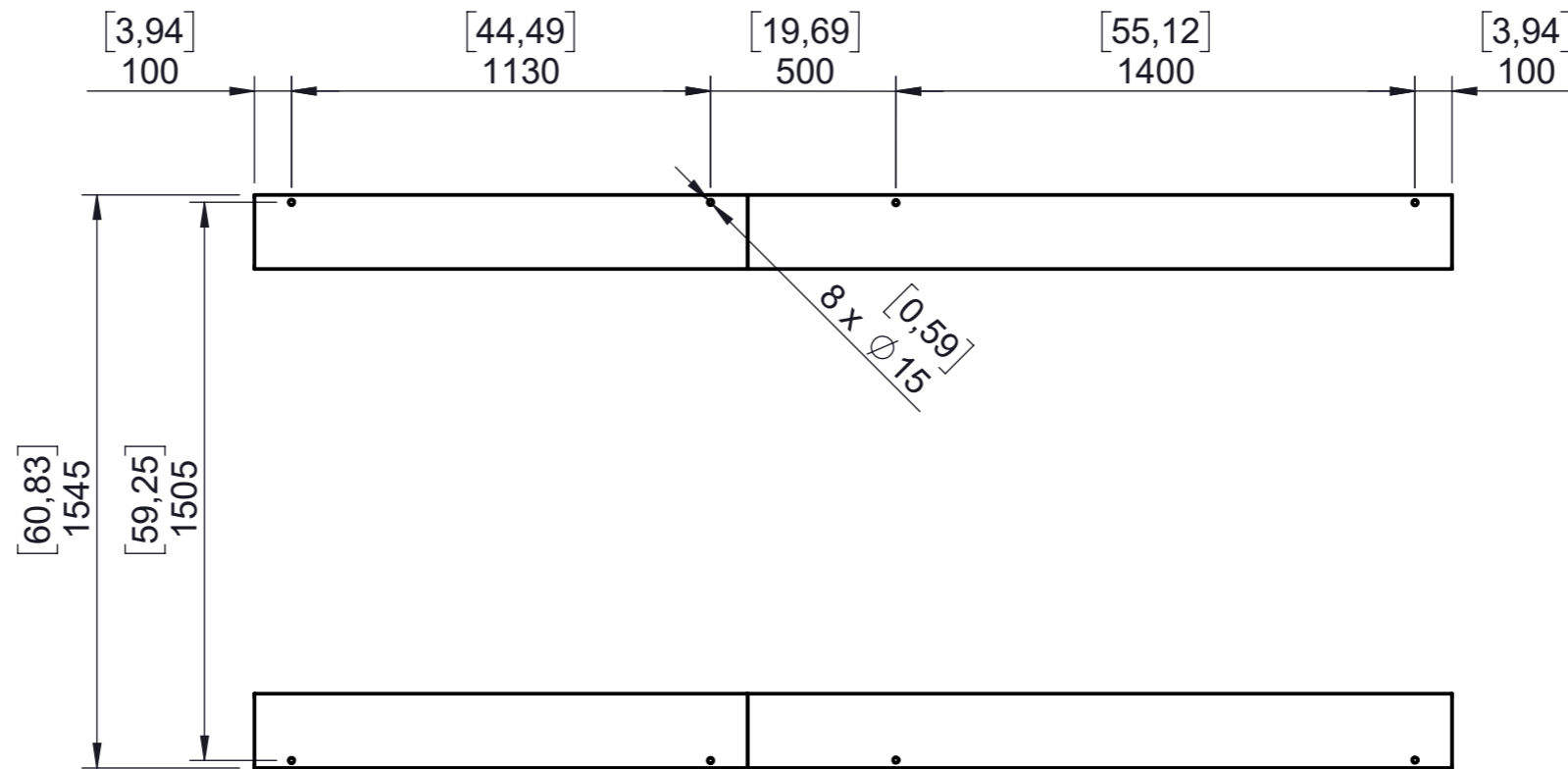
DOPORUČENÝ MANIPULAČNÍ PROSTOR RECOMMENDED SPACE



[] in inches

UNLESS OTHERWISE SPECIFIED, ALL DIMENSIONS ARE IN MILLIMETERS		SURFACE FINISH:		PROJECTION: ISO-E	SEMIPRODUCED MATERIAL
				TOLERATION: ISO 2768 m K	PROTECTED ACCORDING TO ISO 16016
				ACCURACY: ISO 8015	
DRAWN BY	NAME	SIGNATURE	DATE	pondělí 27. ledna 2014	NAME:
	ING. TOMÁŠ MÍVALT		CHANGED	pondělí 1. února 2021	MP-DW-402
		ASSEMBLY NO:		T-04b-01	DRAWING NO:
		MATERIAL:			T-04b-01_09
MIVALT obchodní společnost		www.mivalt.cz		MASS: 2933169.34 g	A3
				SCALE: 1:30	SHEET 2 FROM 3 SHEETS

KOTEVNÍ BODY ANCHOR POINTS



[] in inches

UNLESS OTHERWISE SPECIFIED, ALL DIMENSIONS ARE IN MILLIMETERS		SURFACE FINISH:		PROJECTION: ISO-E	SEMIPRODUCED MATERIAL	
				TOLERATION: ISO 2768 m K	PROTECTED ACCORDING TO ISO 16016	
				ACCURACY: ISO 8015		
DRAWN BY	ING. TOMÁŠ MÍVALT	SIGNATURE		DATE	pondělí 27. ledna 2014	NAME:
		CHANGED			pondělí 1. února 2021	MP-DW-402
				ASSEMBLY NO:	T-04b-01	DRAWING NO:
				MATERIAL:		T-04b-01_09
MIVALT obchodní společnost				www.mivalt.cz		A3
				MASS: 2933169.34 g	SCALE: 1:30	SHEET 3 FROM 3 SHEETS